

*Otto Bock*<sup>®</sup>

QUALITY FOR LIFE



# Custom Seating

Custom seating solutions



## Otto Bock HealthCare

Otto Bock HealthCare develops its innovative products in close cooperation with physicians, therapists, and technicians in its own Sinsheim development centre.

During this process, the focus is always on people and their individual needs and requirements. Every product reflects these high standards through variety, safety, and a practical and colourful design.

Otto Bock HealthCare: Quality for Life!





## Declaration of Conformity

The products listed in this catalogue conform with the requirements of guideline 93/42EEC and the MPG (Medical Products Law). They do not bear the CE symbol, when they are custom products or intended for use as part of custom products and are therefore exempt from the identification requirements.

## Safety data sheets

Please observe the information found on Otto Bock product packaging. Safety data sheets are available for materials that require labels according to the Ordinance on Hazardous Substance. These EU safety data sheets (SBD) or Material Safety Data Sheets (MSDS) contain important safety instructions for handling hazardous substances.

Upon request, we can provide you with these data sheets in compiled form on CD-ROM (article no. 646C16). Occupational safety and environmental protection factors according to the current state of knowledge have been taken into consideration.

	Shape system	4 - 9
	Shape cushions	10 - 13
	Seating shell modules	14 - 17
	Pelvis-torso positioning	18 - 23
	Head support systems	24 - 29
	Arm positioning	30 - 37
	Leg positioning	38 - 43
	Materials	44 - 53
	Small parts	54 - 59
	Tools	60 - 65
	Upholstering, trimming, coating	66 - 70



# Shape system

The shape system combines the contemporary vacuum impression process with the latest digitization technology. The vacuum impression process allows special seating shell fitting requirements to be met through functional stimulation without being pressed for time. Data collection using Shape Digitizer allows a digital model of the seating solution to be prepared quickly and inexpensively.

## Practical application



### Preparing the vacuum cushions

A vacuum cushion is used as the base for the impression. It is put into a semi-solid state and placed onto the fitting chair prior to the fitting.



### Pre-shaping the vacuum cushions

Before taking the impression, the seat and back cushions are pre-shaped in conjunction with the patient.



### Shaping the vacuum cushions in conjunction with the patient

The patient is now positioned in the fitting chair with the prepared vacuum cushions. The ideal shape of the seat fitting is determined by applying a vacuum and shaping the cushions. The fit can be verified and adapted over extended periods of time by using functional stimulation. This step in the fitting process is crucial for the success of seat fittings.



### Drawing auxiliary lines

To prepare for data collection, auxiliary lines must be drawn on the cushion.



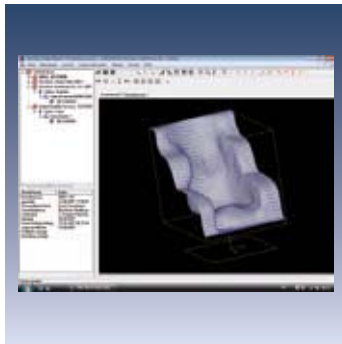
### Initializing the digitization device

In order for the digitization device to determine the precise position of the stylus in space, markings have to be placed onto the digitization table in advance. Now the device is ready to use. A computer with the Shape software program is required to operate the digitization device.



### Digitization the vacuum cushions

The auxiliary lines are recorded point-by-point with the digitization stylus and transferred to the computer. This process makes it possible to correct the shape already during data collection and to compensate for minor deviations. Other digital processes require extensive post-processing in order to smooth or adjust the surface.



The software permits on-screen post-processing. Detailed changes can be made to the "virtual impression" at any time. The surface can be generated for a realistic view of the 3D model. The surface and the digitalized model can be viewed on-screen simultaneously and compared to each other directly. You can easily send the final data to Otto Bock via e-mail.



We produce a 1:1 copy of the vacuum impression using the latest CNC technology. The final product is a precisely-fitted unfinished cushion made from B75 foam or neoprene for further processing in a customized seating shell.



Once the technician has installed the seat and back cushions in the desired exterior shell, the seating shell is ready for fitting.



You will find comprehensive Otto Bock product finishing services (upholstering, trimming, coating) for your products on pages 66 – 70.

## Required equipment

A complete Shape system consists of a fitting chair, vacuum impression cushion and the digitization package (consisting of the digitization table, digitization stylus, interface and software).

In addition to the Shape system, a PC is also required (minimum Pentium II 3 350 Mhz, 128 MB RAM, 120 MB free hard drive space). The software is compatible with Windows ME/98SE/2000/XP and Vista.

### Digitization package



Includes: Digitization stylus and interface, digitization tablet and software. The digitization equipment converts the vacuum impression taken from the patient into electronic data. A computer with a USB interface and Windows operating system is required.

Order no.	Unit
448H7	pc.

### Back and seat vacuum cushion



Latex filled with synthetic granulate. During evacuation, the shape of the cushion is customized to the patient. The final shape is set by additional evacuation.

Order no. Back cushion	Order no. Seat cushion	Dimensions	Unit
432B1=29-5	438B1=29-5	SW 29 cm	pc.
432B1=34-5	438B1=34-5	SW 34 cm	pc.
432B1=39-5	438B1=39-5	SW 39 cm	pc.
432B1=44-5	438B1=44-5	SW 44 cm	pc.

### Vacuum cushion (no illustration)

One-piece vacuum cushion.

Order no.	Dimensions	Unit
448A13=81x91-5	81 x 91 cm	pc.

### Hand pump



To evacuate the vacuum cushions.

Order no.	Unit
448A33	pc.

### Fitting chair



The fitting chair is based on a seating shell mobility base equipped with an adjustable attachment. Functional stimulation is possible in conjunction with the vacuum cushion, i.e. the patient can "try out" the impression before the final shape is defined.

Order no.	Unit
472Q29=10000	pc.

## Arm rest for fitting chair



As an option for the fitting chair.

Order no.	Unit
HR3330-8100	pc.

## Individual footrests for fitting chair



Individual footrests instead of the single-panel footrest as an option for the fitting chair.

Order no.	Unit
475B34=PK008	pc.





## Shape cushions

Shape cushions are seat and back cushions produced using the Shape software. By using digitization technology and milling the cushion from a single block, we can guarantee a precisely defined degree of foam rigidity for each part of the cushion. Various raw materials and custom outside dimensions permit optimal seat cushion fittings.

## "Shape" seat and back cushions made of B75 foam



High-quality B75 foam cushion milled according to patient data, for installation into an exterior shell. These cushions are milled based on patient data supplied by you to Otto Bock Service Fabrication. Taking an impression using the Shape equipment is required prior to production.

### Seat cushion

Order no.	Unit
472C32=ST001	pc.

### Back cushion

Order no.	Unit
472C32=ST002	pc.

## "Shape" seat and back cushions made of B75 foam with radius



High-quality B75 foam cushion milled according to patient data, for installation into an exterior shell. These cushions are milled based on patient data supplied by you to Otto Bock Service Fabrication and also have a milled radius along the sides. This makes them easy to install into the Otto Bock aluminium seating shell. Taking an impression using the Shape equipment is required prior to production.

### Seat cushion

Order no.	Unit
473C00=ST001	pc.

### Back cushion

Order no.	Unit
473C00=ST002	pc.

**"Shape" seat and back cushions made of neoprene**



Neoprene cushion milled according to patient data, for installation into an exterior shell. These cushions are milled based on patient data supplied by you to Otto Bock Service Fabrication. Taking an impression using the Shape equipment is required prior to production.

**Seat cushion**

Order no.	Unit
473C00=ST012	pc.

**Back cushion**

Order no.	Unit
473D00=ST012	pc.

**"Shape" seat and back cushions made of neoprene with radius**



Neoprene cushion milled according to patient data, for installation into an exterior shell. These cushions are milled based on patient data supplied by you to Otto Bock Service Fabrication, and also have a milled radius along the sides. This makes them easy to install into the Otto Bock aluminium seating shell. Taking an impression using the Shape equipment is required prior to production.

**Seat cushion**

Order no.	Unit
473C00=ST011	pc.

**Back cushion**

Order no.	Unit
473D00=ST011	pc.



## Seating shell modules

Seating shell modules are used for the installation of seat and back cushions. The seating shell modules provide exterior support for the soft foam and also provide various attachment options for adapters, belts and other accessories.

Aluminium seating shell modules can be optimally adapted to the seating shell fitting requirements. Unlike other materials, they are inherently stable and resistant to moisture.

## Coated aluminium shell

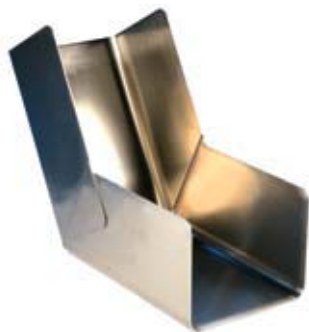


Width	Seat	Unit
30 cm	475C23=SB050	pc.
34 cm	475C23=SB051	pc.
38 cm	475C23=SB052	pc.
42 cm	475C23=SB053	pc.
46 cm	475C23=SB054	pc.
50 cm	475C23=SB055	pc.

Width	Back	Unit
30 cm	475C23=SB060	pc.
34 cm	475C23=SB061	pc.
38 cm	475C23=SB062	pc.
42 cm	475C23=SB063	pc.
46 cm	475C23=SB064	pc.
50 cm	475C23=SB065	pc.

Please consult page 70 for a selection of coating colours.

## Aluminium shell, uncoated



Width	Seat	Unit
30 cm	475C23=SR050	pc.
34 cm	475C23=SR051	pc.
38 cm	475C23=SR052	pc.
42 cm	475C23=SR053	pc.
46 cm	475C23=SR054	pc.
50 cm	475C23=SR055	pc.

Width	Back	Unit
30 cm	475C23=SR060	pc.
34 cm	475C23=SR061	pc.
38 cm	475C23=SR062	pc.
42 cm	475C23=SR063	pc.
46 cm	475C23=SR064	pc.
50 cm	475C23=SR065	pc.

## Trapezoid adapter, complete



Designed to match the trapezoid interface adapter, the trapezoid seating shell adapter can be used to attach the seating shell to the respective mobility base.

Order no.	Width	Depth	Load capacity	Unit
HR32043590	23.5 cm	17.5 cm	75 kg	pc.

## "Parallel" seating shell adapter



Adapter for seating shell installation. Available in 2 sizes for various seating shell sizes. Matching "Parallel" footrest system and back angle adjustment.

Order no.	Width	Depth	Load capacity	Unit
Size 1 HR32046700	23.5 cm	17.5 cm	75 kg	pc.
Size 2 HR32046800	27.5 cm	22 cm	110 kg	pc.

## Hang-in adapter for folding wheelchairs



Used to attach the "Parallel" seating shell adapter to manual folding wheelchairs.

Order no.	For seat width (wheelchair)	Unit
HR22617100	28 to 36 cm	pc.
HR22627100	38 to 52 cm	pc.

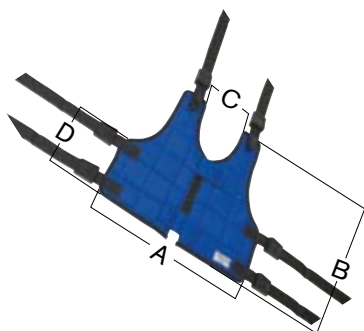


## Pelvis-torso positioning

In addition to head supports and channel forearm rests, positioning systems are used for seating support and positioning in seating shells or wheelchairs. These systems are usually installed in close proximity to the body; some only keep the pelvis in the ideal position, while others support both the pelvis and torso.

Depending on the initial situation, positioning systems allow the pelvis and torso to be kept in a symmetrical position.

## Fixation vest



To position the torso in a seating shell. The front of the fixation vest opens and closes with a zipper.  
Material: Durable nylon.

Order no.	Size	Dimensions	Colour
473K00=SK027	1	A 31.0 cm, B 29.0 cm C 9.0 cm, D 12.0 cm	blue, red, red, black
473K00=SK028	2	A 36.0 cm, B 38.0 cm C 11.0 cm, D 14.0 cm	blue, red, light grey, black
473K00=SK029	3	A 40.0 cm, B 44.0 cm C 13.0 cm, D 16.0 cm	blue, red, light grey, black

Please specify the colour when placing your order!



## Pelvic band



Used to position the pelvis in a seating shell. The two concave spinae pads fit the patient's spinae perfectly. The width can be adjusted via the anterior band. It is put on and taken off using a ratchet closure. Material: Stainless steel band, PU foam pads.

*The maximum outside dimension is the spinae distance + 8 cm.*

Order no.	Size	Spinae distance	Unit
HR63050010	1	Approx. (11)-18 cm	pc.
HR63050020	2	Approx. 17-24 cm	pc.
HR63050030	3	Approx. 23-30 cm	pc.



## Lap belt



Used to position the pelvis in a seating shell or wheelchair.  
Material: Durable nylon.

Order no.	Width	Length	Colour
473P00=SK001	5 cm	81 cm	blue, red, light grey, black

Please specify the colour when placing your order!



## Lap belt with spinae pads



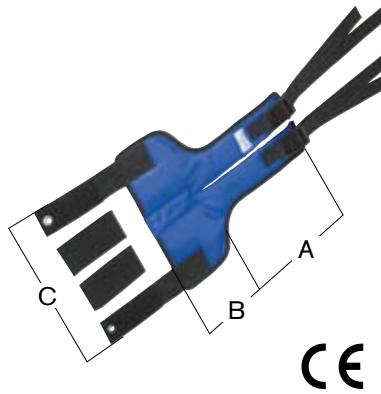
Used to position the pelvis in a seating shell or wheelchair.  
Material: Durable nylon.

Order no.	Size	Dimensions	Colour
HR22615300	1	Width: 5 cm Pad length: 15 cm	black
HR22625300	2	Width: 5 cm Pad length: 20 cm	black

Please specify the colour when placing your order!



### Groin strap

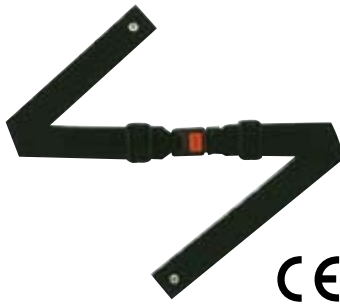


Used to position the pelvis in a seating shell. The patient sits in the seat and the leg straps pass through the groin area. Material: Durable nylon.

Order no.	Size	Dimensions	Colour
473N00=SK012	1	A 22.5 cm B 8.5 cm C 22.5 cm	blue, red, light grey, black
473N00=SK013	2	A 25.5 cm B 12.5 cm C 28.0 cm	blue, red, light grey, black
473N00=SK014	3	A 28.5 cm B 17.5 cm C 31.0 cm	blue, red, light grey, black

Please specify the colour when placing your order!

### Lap belt with metal buckle



Used for light positioning and to protect the patient from falling out of a seating shell or wheelchair. Equipped with a quick-release buckle.

Order no.	Width	Unit
446B10=1.5-7	38 mm	pc.
446B10=2-7	50 mm	pc.

### Belt with snap buckle



Used for light positioning and to protect the patient from falling out of a seating shell or wheelchair. The belt can be adjusted as required.

Order no.	Belt width	Unit
446B1=1.5-7	38 mm	pc.
446B1=2-7	50 mm	pc.

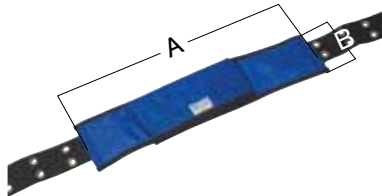
### Belt with plastic buckle



Used for light positioning and to protect the patient from falling out of a seating shell or wheelchair. Equipped with a plastic buckle. The belt can be adjusted as required.

Order no.	Belt width	Unit
434S6=1-7	25 mm	pc.

## Chest belt with overlapping tongue

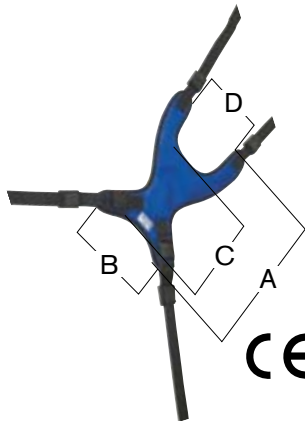


Used to position the torso in a seating shell or wheelchair. The size refers to the nylon pads. Material: Durable nylon.

Order no.	Size	Dimensions	Colour
473P00=SK003	1	A 42 – 50 cm B 8.5 cm	blue, red, light grey, black
473P00=SK004	2	A 71 – 81 cm B 10 cm	blue, red, light grey, black

Please specify the colour when placing your order!

## Chest and shoulder pad



Used to position the pelvis and torso in a seating shell. The lower end of the chest and shoulder pad rests on the spinae, while the upper straps pass over the shoulders. The upper edge (end of dimension C) should be positioned approximately at the height of the sternum. Material: Durable nylon.

Order no.	Size	Dimensions	Colour
473K00=SK020	1	A 24.0 cm, B 18.0 cm C 9.0 cm, D 10.0 cm	blue, red, light grey, black
473K00=SK021	2	A 33.0 cm, B 20.0 cm C 19.0 cm, D 10.0 cm	blue, red, light grey, black
473K00=SK022	3	A 40.0 cm, B 25.0 cm C 22.0 cm, D 13.0 cm	blue, red, light grey, black

Please specify the colour when placing your order!

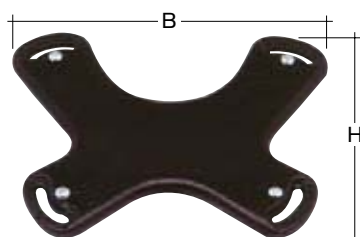
## Four-way chest strap kit



Four-way chest strap kit to position the torso in a seating shell or wheelchair. The length of the straps can be customized.

Order no.	Strap width	Unit
434S7=1.5-7	35 mm	pc.

## Chest pad



Holds the torso in place in a seating shell or wheelchair. Material: Flexible PU foam.

Order no.	Size	Unit
434P21=4-7	Small	pc.
434P21=3-7	Medium	pc.
434P21=2-7	Large	pc.
434P21=1-7	Extra large	pc.

**Small:** H=10.0 cm, W=16.5 cm

**Medium:** H=16.5 cm, W=21.0 cm

**Large:** H=30.0 cm, W=29.0 cm

**Extra large:** H=38.0 cm, W=29.0 cm

**Straps for chest pad / snap buckle**



To attach the 434P21 chest pad to a seating shell or wheelchair. Closes with a snap buckle. The length of the belt can be customized.

Order no.	Strap width	Unit
434S5=1-7	25 mm	4 pcs
434S6=1-7	25 mm	1 set

**Straps for chest pad / hook-and-loop**



To attach the 434P21 chest pad to a seating shell or wheelchair. Closes with a hook-and-loop closure. The length of the belt can be customized.

Order no.	Strap width	Unit
434S3=1-7	25 mm	4 pcs
434S4=1-7	25 mm	1 set



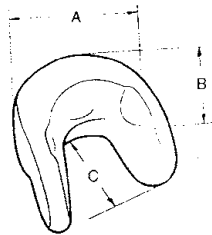
## Head support systems

Otto Bock offers a large variety of head and neck supports. With the appropriate mounting kits, these supports can be attached to most Otto Bock seating systems, seating shells and standard wheelchairs. The headrests consist of polyurethane foam and can be cleaned with mild soap and water.

## Head and neck support with lateral control



CE

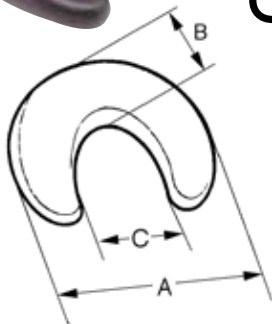


Order no.	Size
430C2=1-7 (Large)	A 220 mm, B 130 mm, C 130 mm
430C2=3-7 (Small)	A 180 mm, B 115 mm, C 90 mm

## Neck support



CE

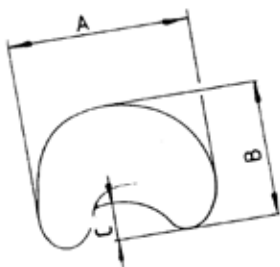


Order no.	Size
430N1=1-7 (large)	A 220 mm, B 60 mm, C 90 mm
430N1=3-7 (small)	A 200 mm, B 60 mm, C 100 mm

## Combination head and neck support

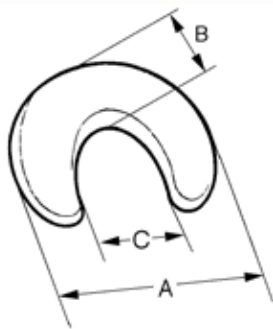


CE



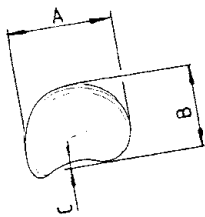
Order no.	Size
430C1=1-7 (large)	A 220 mm, B 130 mm, C 90 mm
430C1=3-7 (small)	A 180 mm, B 115 mm, C 55 mm

Wedge-shaped neck support



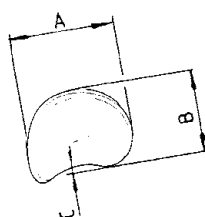
Order no.	Size
430N1=2-7	A 200 mm, B 60 mm, C 100 mm

Headrest



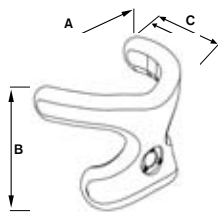
Order no.	Size
430H1=1-7 (large)	A 290 mm, B 150 mm, C 50 mm
430H1=3-7 (small)	A 250 mm, B 100 mm, C 50 mm

Soft headrest



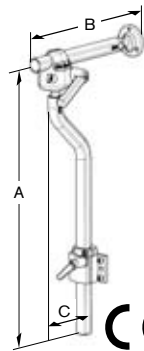
Order no.	Size
430H2=1-7 (large)	A 280 mm, B 190 mm, C 76 mm
430H2=3-7 (small)	A 190 mm, B 150 mm, C 50 mm

## X-shaped neck support



Order no.	Size
430C3=1-7 (large)	A 220 mm, B 195 mm, C 160 mm, D 130 mm
430C4=1-7 (small)	A 203 mm, B 147 mm, C 110 mm, D 85 mm

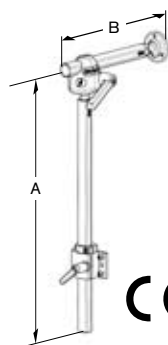
## Multi-axis mounting kit, offset



Dimensions: A=400 mm; B=200 mm; C=70 mm

Order no.	Colour
476L52=SK010	silver
476L52=SK015	black

## Multi-axis mounting kit, straight

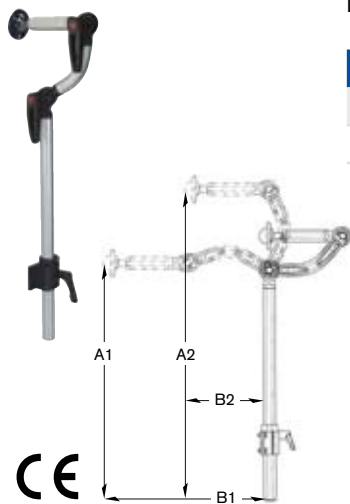


Dimensions: A=400 mm; B=200 mm

Order no.	Colour
476L52=SK020	silver
476L52=SK025	black

## "Goose Neck" mounting kit

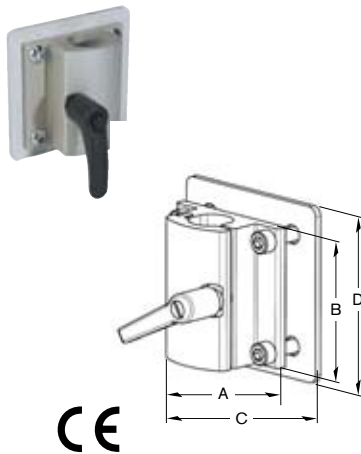
Dimensions: A1=256 mm; A2=403 mm; B1=525 mm; B2=123 mm



Order no.	Colour
476L52=SK030	silver
476L52=SK035	black

## Mounting clamp, reinforced

Dimensions: A=63,5 mm; B=63,5 mm; C=80,0 mm; D=80,0 mm



Order no.	Colour
477L52=SK050	silver
477L52=SK055	black



## Arm positioning

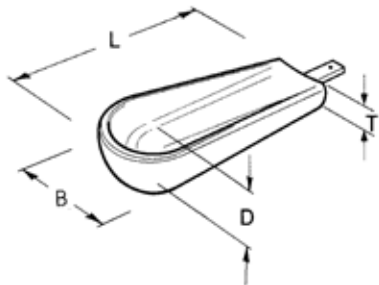
Modular arm rests are available in three sizes; they can be used in combination with the modular hand supports. The modular system allows flexibility in order to meet the individual needs of various patients. Combined with the appropriate hand support, the modular forearm rest provides functional support for patients with weakness or paralysis of the upper extremities. Each forearm and hand support combination can be installed directly to the wheelchair arm rests and the arm rest swivel units. Support straps can be used if required. We supply all hardware required to mount the modular arm rest to the wheelchair arm rest. If desired, the channel forearm rest can also be used without the hand support for special seating systems. Thus the channel forearm rest can also be used in combination with hand control units, computer joysticks, etc. This permits optimal arm positioning and guidance.

## Channel forearm rest



Order no.	Size
436A2=3-7 (small)	L 205 mm, B 105 mm, D 40 mm, T 25 mm
436A2=2-7 (medium)	L 290 mm, B 120 mm, D 45 mm, T 25 mm
436A2=1-7 (large)	L 355 mm, B 120 mm, D 45 mm, T 25 mm

CE

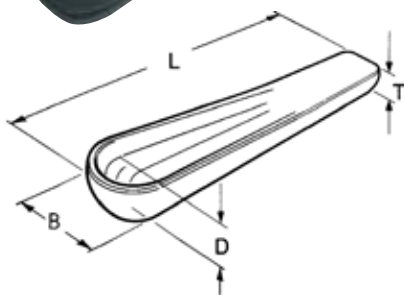


## One-piece channel forearm rest



Order no.	Size
436A3=2-7	L 460 mm, B 120 mm, D 45 mm, T 25 mm

CE



### Hand support, flat



The hand supports can be installed in combination with the Otto Bock modular forearm rests. If a particular type of hand support is not required, flat hand supports may be beneficial. They should also be used as the basis for custom fabrication. Since the modular hand supports are offered in various versions, a therapist or technician can decide which design meets the patient's needs best. A set of belts with hook-and-loop closures can be combined with the channel forearm rests. The hand supports are made of polyurethane foam.

Order no.	Size
436P5=1-7	L 230 mm, B 140 mm
436P5=2-7	L 180 mm, B 115 mm

### Hand support, palm extensor



Order no.	Installation side	Size
436P2=L1-7	left	L 235 mm, B 165 mm
436P2=R1-7	right	
436P2=L2-7	left	L 205 mm, B 145 mm
436P2=R2-7	right	

### Hand support, horn type



Order no.	Installation side	Size
436P3=L1-7 (Large)	left	L 190 mm, B 145 mm, D 90 mm
436P3=R1-7 (Large)	right	
436P3=L2-7 (Small)	left	L 180 mm, B 130 mm, D 80 mm
436P3=R2-7 (Small)	right	

## Hand support, cone type



The connecting rod can be deformed for plantar or dorsal flexion.

Order no.	Installation side	Size
436P4=L1-7 (Large)	left	L 200 mm, B 130 mm, D 90 mm
436P4=R1-7 (Large)	right	L 200 mm, B 130 mm, D 90 mm
436P4=L2-7 (Small)	left	L 200 mm, B 130 mm, D 70 mm
436P4=R2-7 (Small)	right	L 200 mm, B 130 mm, D 70 mm

## Arm support strap



A set of straps with hook-and-loop closures improves the safety of patients whose upper extremities tend to slide off the arm rest or hand support. This set of straps can be used with the arm rests and hands supports shown above.

Order no.	Size
436S1=1-7	L 510 mm, B 25 mm

## Adjustment plate



The adjustment plate allows axial adjustments of the entire modular arm rest unit to the left or right by approximately 3 cm.

Order no.
436H1=7

## Swivel unit bracket



This component is needed in order to mount the swivel unit for the channel forearm rest to the following Avantgarde Desk side panels: 481E45=PK052/ PK054/ PK064/ PK090/ PK100/ PK110/ PK119/ PK120

Order no.	Installation side
481E45=LK140	left
481E45=RK140	right

## Swivel unit for channel forearm rest



The forearm angle adjustment unit allows settings of 0°, 12.5°, and 25°. Two horizontal adjustment functions are available:

- a) Continuous adjustment; the locking pin is lifted and rotated by 180°.
- b) In increments of approximately 15°; the locking pin must be in the locking position.

This swivel unit is compatible with all Otto Bock modular channel forearm rests.

The swivel unit can be mounted on the left or right side of the wheelchair. It is supplied ready for right-hand installation. With some minor adjustments, it can be installed on the left side.

Attention: Using the swivel unit increases the height of the arm rest by approximately 3 cm. In order to compensate for this, install a height-adjustable arm rest.

For the Avantgarde Desk side panel, a swivel unit for a tube Ø of 19 mm is required. A tube Ø of 20 mm is required for the Start series.



Order no.	Tube-Ø	Colour
476E52=SK010	19 mm	silver
476E52=SK015	19 mm	black
476E52=SK020	20 mm	silver
476E52=SK025	20 mm	black
476E52=SK030	22.2 mm	silver
476E52=SK035	22.2 mm	black
476E52=SK040	25.4 mm	silver
476E52=SK045	25.4 mm	black

## Wheelchair arm rest



The arm rests were designed to replace damaged or unsuitable arm rests on standard wheelchairs. They are easy to interchange and can be supplied in two sizes. The standard length can be attached to wheelchair arm rests with a distance of 225 mm between bore holes; the Desk arm rest can be used for a distance of 85 mm between bore holes.

Order no.	Size
436A4=1-7 (Standard)	A 360 mm, B 60 mm
436A4=2-7 (Desk)	A 260 mm, B 60 mm

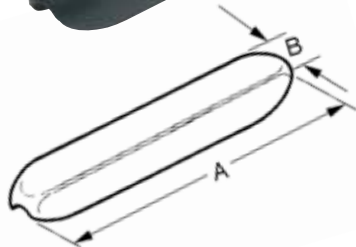
## Arm rest with side panel



The arm rests with side panels have a wide surface with continuous panels for additional comfort. They were designed to replace standard wheelchair arm rests with a distance of 225 mm between bore holes.

Order no.	Size
436A33=1-7	L 360 mm, B 90 mm, H 200 mm

## Rounded arm rest



Compared to the standard arm rest, the rounded arm rest has an improved contour and rounded surfaces. Both sizes can be easily installed on standard arm rests. Standard and Desk arm rests can be installed on arm rests with a distance of 225 mm or 85 mm between bore holes, respectively.

Order no.	Size
436A5=1-7 (Standard)	A 360 mm, B 70 mm
436A5=2-7 (Desk)	A 260 mm, B 70 mm

## Arm pad support, fixed



Matches the arm pads and arm pad support bracket.  
Colour: Black.

Order no.	Adjustment range	Spacing	Unit
475E30=RE004*	80 mm	20 mm	pc.
475E30=LE004**	80 mm	20 mm	pc.

*\*for the right side of the shell, \*\*for the left side of the shell*

## Arm pad support bracket



Flat bracket for arm pad support.  
Attached to the side of the shell with 4 blind rivets.

Order no.	Height	Width	Unit
445E23=SK001	100 mm	75 mm	pc.

## Arm pad



Matches the arm pad support.  
PUR foam, colour: Black.

Order no.	Size	Length	Unit
481E09=SK012	1	270 mm	pc.
481E09=SK013	2	235 mm	pc.

## Tray, transparent



Transparent tray in three sizes. Attaches to the arm pads. Adjustable for various widths. The measurement is taken from the outside edge of the arm pads. Material: Polycarbonate

Order no.	Size	Width from/to	Unit
481E00=SK160	1	380 – 473 mm	pc.
481E00=SK170	2	440 – 533 mm	pc.
481E00=SK180	3	500 – 593 mm	pc.





## Leg positioning

Otto Bock offers a large selection of leg positioning products for custom fittings. They assist with correct positioning for patients who require additional support.

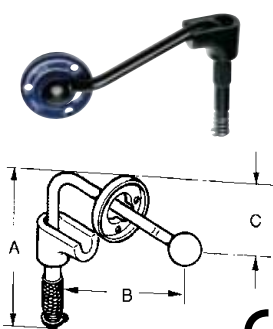
## Calf support



The calf support can be attached to any wheelchair with 434H1 STS clamps and the 434F3 mounting kit. Advantages of this system: The calf plates can be folded out of the way forwards or backwards. The calf plates are anatomically shaped, well padded and very comfortable.

Order no.	Size
440P2=1-7	B 170 mm, H 230 mm

## STS mounting kit, offset



Dimensions: A=110; B=95; C=45 mm.

Order no.	Size	Colour
434F3=L	left	chrome
434F3=R	right	chrome
434F3=L-7	left	black
434F3=R-7	right	black

## STS clamps

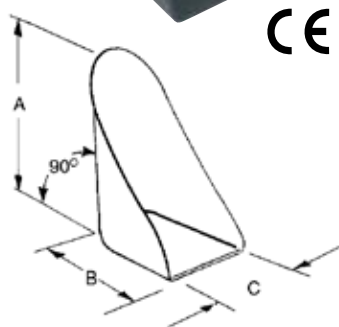


These clamps can be installed on the wheelchair with no modifications.

For Otto Bock wheelchairs, you require 434H1 STS clamps for a tube Ø of 25 mm.

Order no.	Tube-Ø	Colour
434H1=7/8	22.2 mm	chrome
434H1=1	25.0 mm	chrome
434H1=3/4	19.0 mm	chrome
434H1=7/8-7	22.2 mm	black
434H1=1-7	25.0 mm	black
434H1=3/4-7	19.0 mm	black

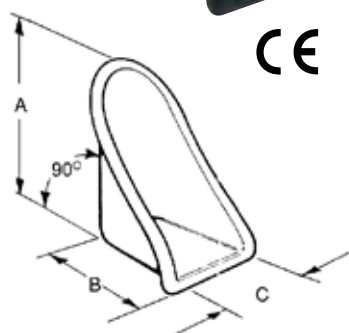
## Foot bucket



The foot bucket offers comfortable, secure support. It can be used for seating systems or wheelchairs. On standard wheelchairs, the foot bucket is installed directly onto the existing foot plate. The foot bucket consists of an ABS shell and a soft PU foam pad. The pad and bucket are ordered separately. Otto Bock offers the foot bucket in two sizes (large and medium); both have an angle of 90°.

Order no.	Size
440R9=1-7 (large)	A 325 mm, B 255 mm, C 185 mm
440R9=2-7 (medium)	A 220 mm, B 255 mm, C 150 mm

## Foot bucket pad



Order no.	Size
440C2=1-7 (large)	A 325 mm, B 255 mm, C 185 mm
440C2=2-7 (medium)	A 220 mm, B 255 mm, C 150 mm

## Abductor, detachable



The abductor can be adapted to existing seating shells with the 475B23=SK003 bracket. The clamp makes the abductor easy to install and remove.

Order no.	Colour	Unit
475N23=SK003	black	pc.

## Abductor, folding



The abductor can be adapted to existing seating shells with the 475B23=SK003 bracket. The height of the abduction block is adjustable and can be folded in order to make it easier to put in or take out the patient.

Order no.	Colour	Unit
475N23=SK006	black	pc.

## "Parallel" footrest system



Complete footrest including knee angle for adaptation to the "Parallel" seating shell interface. Adjustable knee angle. Continuous footrest height adjustment. Locked at 90°; can be folded up for transportation. Load capacity up to 50 kg (patient including shell). Colour: Frame black, footrest grey.

Order no.	Size	for Parallel adapter	Width	Footplate	Depth	Unit
475B23=SK009	1	HR32046700	28 cm	20 cm		pc.
475B23=SK010	2	HR32046800	32 cm	20 cm		pc.

### Hook & loop strap

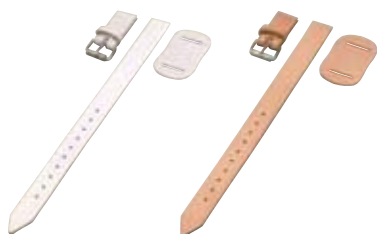


The hook & loop straps are used for easier positioning; they are attached to footplates or heel cups with a strap guide loop and flap. Available in three colours:

black
  blue
  red

Order no.	Colour	Unit
21Y78=25-2	red	pc.
21Y78=25-5	blue	pc.
21Y78=25-7	black	pc.

### Buckle strap



The buckle straps with the buckle section, buckle protector and welded roller buckle are suitable for more demanding foot positioning tasks. They are installed on footplates or heel cups. Material: Chrome leather – lohgar leather.

Order no. white	Length	Width	Unit
21Y56=240	24 cm	2 cm	pc.
21Y56=280	28 cm	2 cm	pc.
21Y56=320	32 cm	2 cm	pc.

Order no. lohgar leather	Length	Width	Unit
21Y60=240	24 cm	2 cm	pc.
21Y60=280	28 cm	2 cm	pc.
21Y60=320	32 cm	2 cm	pc.



## Materials

Otto Bock offers a variety of materials for seating shell construction. Various upholstery fabrics in many colours and a variety of padding materials are available to finish Shape seat cushions.



## "Terry cloth" cover fabric



"Black"



"Crazy"

Cover fabric for the Ortho-Seat 2 seating system. It is extremely flexible. This lightweight fabric is similar to classic terry cloth.

Order no.	Width	Unit
623D2=A / "Black"	1.40 m	running metre
623D2=F / "Crazy"	1.40 m	running metre

## "Neoprene" cover fabric

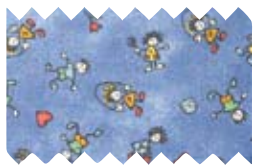


The surface is covered in terry cloth, and the back in nylon.

Order number	617S15=3
Length	m
Width	1,200 mm
Thickness	3 mm
Colour	black

► Please specify the length in metres when placing your order.

## Foam-lined cover fabric



"Design 15"



"Design 16"

Foam-lined cotton cover fabric for seating shells.

Order no.	Width	Unit
623D1=D-15 / Design 15	1.40 m	qm
623D1=D-16 / Design 16	1.40 m	qm

## "Spacer" cover fabric



The spacer fabric ensures optimum air distribution in all directions, soft cushioning, very good restoring characteristics and perfect contour adaptation.

Order no.	Width	Unit
623D8=1/ black colour	1.30 m	qm
623D8=1 / white colour	1.30 m	qm

### Artificial leather (Skai)



Used to make incontinence-resistant upholstery.

Order no.	Width	Unit
621K1=S / black colour	1.40 m	qm

### "Dartex" cover fabric



Cover fabric used for our Basic line of seat cushions. Incontinence-resistant, breathable, extremely flexible.

Order no.	Width	Unit
623D4=1/ black colour	1.50 m	running metre

### "Design" cover fabric



Extremely durable cotton seating shell cover fabric in attractive woven designs.

Order no.	Width	Unit
623D1=D-11/"Design 11"	1.40 m	running metre
623D1=D-13/"Design 13"	1.40 m	running metre



### "Nylon" fabric for strap systems



Nylon material. For strap systems. Not suitable as a cover fabric for seating shells.

Order no.	Width	Unit
623F31=4001/ Black colour	1.50 m	qm
623F31=4322/ Red colour	1.50 m	qm

## Neoprene adhesive



Used to bond neoprene and many textiles.

Order no.	Unit
636W65=0.800	0.8 kg
636W65=3.800	3.8 kg



Highly flammable



Irritant

## Thinner



Used to thin 636W65 neoprene adhesive and to clean tools.

Order no.	Unit
634A67=0.700	0.7 kg
634A67=1.750	1.75 kg



Highly flammable



Hazardous to health

## Otto Bock SuperSkin



Sprayable **PUR** synthetic to finish the surfaces of **PUR** soft foam covers and seat cushions.

The required tools (coating set) can be found in the chapter "Tools".

Order no.	Colour	Unit
635C1=1-9010	Pure white	0.9 kg
635C1=2.5-9010	Pure white	2.3 kg
635C1=2.5-1026	Bright yellow	2.3 kg
635C1=2.5-3004	Purple red	2.3 kg
635C1=2.5-3020	Traffic red	2.3 kg
635C1=2.5-4008	Signal violet	2.3 kg
635C1=2.5-5010	Gentian blue	2.3 kg
635C1=2.5-6034	Pastel turquoise	2.3 kg
635C1=2.5-7035	Light grey	2.3 kg
635C1=2.5-9011	Black	2.3 kg
635C1=1-1050	Gold	0.9 kg



Highly flammable



Irritant

### SuperSkin cleaner



For high-performance spray guns and other foam finishing tools.  
**Not for use as thinner!**

Order no.	Unit
634A80=1	0.75 kg
634A80=2.5	1.9 kg



Highly flammable



Irritant

### Soft foam component A



2-component PUR foam.  
 Mixing ratio A:B = 100:40

Order no.	Unit
617D50	0.865 kg
617D50=9.320	9.320 kg

### Soft foam component B



2-component PUR foam.  
 Mixing ratio A:B = 100:40

Order no.	Unit
617D51	0.865 kg
617D51=4.600	4.600 kg



Hazardous to health

## Plastazote



### White

For the production of padding and firm pads.

Order no.	Thick-ness	Sheet size	Unit
617S21=6	6 mm	1,000 x 1,000 mm	pc.

### Blue

For the production of padding and firm pads.

Order no.	Thick-ness	Sheet size	Unit
617S17=6	6 mm	1,000 x 1,000 mm	pc.
617S17=10	10 mm	1,000 x 1,000 mm	pc.
617S17=12	12 mm	1,000 x 1,000 mm	pc.

## Relax foam



### Pink, B60

For use in highly pressure-sensitive areas of cushions. The foam distinguishes itself through low restoring forces; it has a density of 60 kg/m<sup>3</sup>.

Order no.	Thick-ness	Sheet size	Unit
616T92=2000x10	10 mm	1,000 x 2,000 mm	pc.
616T92=2000x20	20 mm	1,000 x 2,000 mm	pc.

### Grey, B65

For use in highly pressure-sensitive areas of cushions. The foam distinguishes itself through low restoring forces; it has a density of 65 kg/m<sup>3</sup>.

Order no.	Thick-ness	Sheet size	Unit
616T93=2000x10	10 mm	1,000 x 2,000 mm	pc.
616T93=2000x20	20 mm	1,000 x 2,000 mm	pc.

## ThermoLyn® PE 200



Low-shrinkage hard polyethylene. Used to make customized exterior shell components or other reinforcing seating shell elements.

Order no.	Thickness	Colour	Unit
616T58=3	3 mm	blue	pc.
616T60=3	3 mm	red	pc.
616T62=3	3 mm	black	pc.

Processing temperature from 165°C to 180°C (heating plate, convection oven, and infrared oven), sheet size: 1000 x 2000 mm. Other dimensions and thicknesses are available upon request.

## TechnoGel® sheet



With bi-elastic blue Lycra® fabric and PE sheeting on one side. Available in two sheet sizes. Shore hardness approximately 2.5°.

Order no.	Thick-ness	Sheet size	Unit
616S116=50x50x0.3	3 mm	500 x 500 mm	pc.
616S116=50x50x0.6	6 mm	500 x 500 mm	pc.
616S116=50x50x0.9	9 mm	500 x 500 mm	pc.
616S116=50x100x0.3	3 mm	500 x 1000 mm	pc.
616S116=50x100x0.6	6 mm	500 x 1000 mm	pc.
616S116=50x100x0.9	9 mm	500 x 1000 mm	pc.

With PU sheeting on both sides. Available in two sheet sizes. Available in 2.5°, 5.0°, 10.0°, and 15.0° shore hardness. Each shore hardness is assigned to a corresponding colour.

Order no.	Colours/Shore	Thick-ness	Sheet size	Unit
616S8=50x50x0.3-colour	2.5° Shore $\hat{=}$ blue (5)	3 mm	500 x 500 mm	pc.
616S8=50x50x0.6-colour	5.0° Shore $\hat{=}$ yellow (4)	6 mm	500 x 500 mm	pc.
616S8=50x50x0.9-colour	10.0° Shore $\hat{=}$ skin colour (0)	9 mm	500 x 500 mm	pc.
616S8=50x100x0.3-colour	15.0° Shore $\hat{=}$ red (2)	3 mm	500 x 1000 mm	pc.
616S8=50x100x0.6-colour		6 mm	500 x 1000 mm	pc.
616S8=50x100x0.9-colour		9 mm	500 x 1000 mm	pc.

## Foam cells



For use in highly pressure-sensitive areas of cushions. The colours refer to the fill quantity and therefore the firmness of the cell: Blue = small fill quantity; black = medium fill quantity; red = large fill quantity. Cell diameter approximately 150 mm.

Order no.	Unit
477C00=ST001 (blue)	1 pc.
477C00=ST002 (black)	1 pc.
477C00=ST003 (red)	1 pc.

TechnoGel® and ThermoLyn® are registered trademarks of Otto Bock.  
Lycra® is a registered trademark of Onpart.

## Foam sheeting



For bonding to ground foam surfaces in order to compensate for minor irregularities.

Order no.	Sheet size	Unit
636S1=2	970 x 2.000 mm	Package of 10

## Strap material, black



Sturdy strap material to make customized belt systems in various widths. See the "Small parts" chapter for matching buckles.

Order no.	Width	Unit
623H17=1-7	25 mm	running metre
623H17=1.5-7	38 mm	running metre
623H17=2-7	50 mm	running metre

## Back-to-back strap material



Matching hook-and-loop sides. Used to easily create loops etc.

Order no.	Width	Unit
623Z34=1002x25	25 mm	running metre





## Small parts

Every seating shell fitting requires a number of small parts: Otto Bock offers a variety of solutions with a selection of hinges, screws, closures and other parts.

## Connection kit



Solid die-cast hinge with required hardware. Colour: Black.

Order no.	Length	Unit
475C23=SK045	75 mm	pc.

## Hinge (no illustration)

Solid die-cast hinge, same as hinge in connection kit, colour: Black.

Order no.	Length	Unit
475C23=ST020	75 mm	pc.

## Adjustment track, complete



Aluminium, bore diameter = 5 mm, colour: Black.

Order no.	Length	Unit
475C23=SK019	110 mm	pc.

## Protective edge band



Colour: Black.

Order no.	for material thickness	Unit
481E00=SF003	2 mm	running metre

## Strap guide loop



Plastic. Colour: Black.  
See the "Materials" chapter for matching strap material.

Order no.	Belt width	Unit
514U2=38-7	38 mm	pc.
514U2=50-7	50 mm	pc.

## Four-way clamp buckle



Plastic. Colour: Black.  
See the "Materials" chapter for matching strap material.

Order no.	Belt width	Unit
514K5	25 mm	pc.

### Snap buckle



Synthetic. Colour: Black.  
See the "Materials" chapter for matching strap material.

Order no.	Strap width	Unit
514K4=1	25 mm	pc.
514K4=1.5	38 mm	pc.
514K4=2	50 mm	pc.

### Glide buckle



Synthetic. Colour: Black.  
See the "Materials" chapter for matching strap material.

Order no.	Strap width	Unit
514X7=1	25 mm	pc.
514X7=1.5	38 mm	pc.
514X7=2	50 mm	pc.

### D-ring



For deviating points with installation bores. Colour: Black.  
See the "Materials" chapter for matching strap material.

Order no.	Strap width	Unit
514Z6=1	25 mm	pc.
514Z6=1.5	38 mm	pc.
514Z6=2	50 mm	pc.

## Star handle



With interior thread.

Order no.	Dimensions	Unit
475N30=ST008	for M6	pc.

## Adjustable clamping lever



With exterior thread. Colour: Black.

Order no.	Dimensions	Unit
475L30=ST014	M6 x 16	pc.
471D00=ST021	M8 x 20	pc.

## Positioning joint



Fits an interior tube diameter of 19.5 mm.

Order no.	Length	Unit
446R3*	127 mm	pc.
446R4**	127 mm	pc.

\*Chrome finish  
\*\*No chrome surface finish





## Tools

Custom seating shells frequently require processing before or after fittings. Milling, drilling, cutting, sawing, or coating:

Otto Bock offers the perfect tools for every step.

### Freehand milling set



Includes a milling tool with two specialized milling cutters, suction hood, and two clamping tools for the milling cutters. This processing set is suitable for on-site seat cushion finishing. The milling tool is also ready for the installation of the mobile suction device 701Z100.

Electrical equipment: 2 m power cord with grounded plug.

Order no.	Maximum RPM	Power requirements	Weight	Unit
756B8=220	4500/min	1x230V/50-60Hz/0.23kW	1.4 kg	pc.

### Electric cutter



Used to cut fabric, foil, and soft leather; cutting depth up to 8 mm; built-in knife sharpener; fully insulated and interference-suppressed according to VDE requirements; two six-bow knives and flat base.

Electrical equipment: 2.80 m power cord with grounded plug.

Order no.	Knife rotation speed under nominal load	Housing diameter	Total length	Power requirements Alternating current	Weight	Unit
756B6	2400/min	50 mm	230 mm	1x230V/50-60Hz/0.056kW	1.2 kg	pc.

#### Six-bow knife

Knife for 756B6 electric cutter.

Article no.	Weight	Unit
756Y28	0.015 kg	pc.

### Electric jigsaw



Robust electronic jigsaw with 4-way orbital action and knob handle. Electronic stroke speed selector according to the material type. FIXTEC quick-clamping system allows blades to be replaced without the use of tools. The base plate can be adjusted quickly and easily without the use of tools; bevel cuts up to 45°; sturdy cast aluminium base plate for precise cutting; chip blower.

Scope of delivery: Vario box, saw blade, chip guard, sole plate.

Order no.	Idle speed	Cutting depth in wood / nonferrous metal / steel	Stroke depth	Power requirements Alternating current	Weight	Unit
756B2	450-3000/min	110 mm/30 mm/10 mm	26 mm	1x230V/50Hz/0.6kW	2.5 kg	pc.

#### Jigsaw blades

For 756B2 electric jigsaw.

Package: 5 pieces.

\*HSS version

Order no.	Application	Length	Teeth	Weight / package	Unit
756Y19=1	Wood	75 mm	3.0 mm	0.04 kg	5 pc.
756Y19=2	Plastic / nonferrous metal *	50 mm	2.0 mm	0.03 kg	5 pc.
756Y19=3	Stainless steel sheet *	50 mm	1.2 mm	0.03 kg	5 pc.

### Cordless hand drill



Cordless hand drill with infinitely variable speed control, reversible rotation direction, brake, switch-on lock, high-performance three-stage planetary gear (two speeds), setting ring with torque pre-selection, plus setting for drilling. Slim, ergonomic handle for optimum centre of gravity position.  
Scope of delivery: 1 quick charger with "battery full" indicator; 1 12-volt battery pack; 1 plastic case.

Order no.	Idle speed	Drilling performance in steel / wood	Wood screws	Quick chuck	Power requirements Alternating current	Weight	Unit
756B11	1 <sup>st</sup> speed = 0-350 2 <sup>nd</sup> speed = 0-1250	12/20 mm	max. 6 mm	1-10 mm	1x230/50 v/Hz	1.2 kg	pc.

### Punching shears



Stainless steel tempered cutting head. PVC-coated shanks.

Order no.	Length	Weight	Unit
719B1	275 mm	0.600 kg	pc.

### "Ideal" metal shears (no illustration)

Stainless steel tempered cutting head. PVC-coated shanks. Can be used as punching shears, pattern shears and plate shears.

Order no.	Length	Weight	Unit
719B2	260 mm	0.500 kg	pc.

### "Ideal" metal shears with gears



HSS blades, wolfram alloy. PVC-coated shanks. For V2A and stainless steel sheets.

Order no.	Length	Weight	Unit
719B3	260 mm	0.520 kg	pc.

### Feed-through shears with gears (no illustration)

SS cutting head, toothed blade. Cutting performance: Sheet steel up to a thickness of 1.5 mm, V2A and chrome-nickel sheets up to a thickness of 1.2 mm. PVC-coated shanks.

Order no.	Length	Weight	Unit
719B4	260 mm	0.520 kg	pc.

### Coating set



Includes a spray gun, suspended pressure reservoir and pressure reducer for connection to a central pressure reducer. For more information on available SuperSkin materials, please consult the "Materials" chapter. For more information regarding "Foam Coating", please request the corresponding information materials under 647H210 and 646Z75=GB.

Order no.	Unit
746B20	pc.

### Compressed air agitator



Used to agitate coating materials, soft foam, etc.

Order no.	Unit
756D3	pc.

### Spray booth with ventilator



Designed with an explosion-proof ventilator – explosion protection according to the 94/9/EC guidelines (ATEX 100). Larger booths are available by request.

Order no.	Power requirements	Air movement m <sup>3</sup> /h	Inside dimensions WxHxD mm	Exterior dimensions WxHxD mm	Unit
758Z60=2	3x400V/50Hz/2,2kW	2300	800x1,290x1,000	800x1,970x1,330	pc.

## Foam saw



For precise cutting of foam and similar materials. Saw blades and guides must be ordered separately. These are based on the desired cut width.

Order no.	Description	Weight	Unit
701S7	Foam saw	1.6 kg	pc.

### Saw blades

For 701S7 foam saw

Order no.	Description	Cut width	Unit
701S8=1	Saw blades f. 701S7 (70 mm)	70 mm	pc.
701S8=2	Saw blades f. 701S7 (130 mm)	130 mm	pc.
701S8=3	Saw blades f. 701S7 (200 mm)	200 mm	pc.
701S8=4	Saw blades f. 701S7 (300 mm)	300 mm	pc.

### Saw blade guide

For 701S7 foam saw

Order no.	Description	Cut width	Unit
701S9=1	Guide f. saw blades 70 mm	70 mm	pc.
701S9=2	Guide f. saw blades 130 mm	130 mm	pc.
701S9=3	Guide f. saw blades 200 mm	200 mm	pc.
701S9=4	Guide f. saw blades 300 mm	300 mm	pc.

## Blind rivet pliers



With spring and swivel head.

Order no.	Unit
719E1	pc.

## Manual rivet nut pliers (no illustration )

Used to insert threaded bushings into sheet materials. The set includes matching rivet nuts.

Order no.	Unit
719E2	pc.



## Upholstering, trimming, coating

An optimum fit is crucial for a proper seating shell fitting. However, your customers also expect a professional seating shell finish. Otto Bock provides this service. High-quality coatings and customized, professional upholstery give a seating shell a premium appearance.

## Aluminium shell trimming and installation service



Order no.	Description
473C00=SK010	Trimming the aluminium shell (edge 1 cm below the cushion)
473C00=SK020	Mounting the connection kit / adapters / components
473S00=SK010	Removing / Mounting accessories

## Seat and back upholstery service



Upholstery service for Shape cushions. For cover fabrics, see the "Materials" chapter.

Order no.	Description
473C00=SK008	Seat cover*
473D00=SK005	Back cover*
473C00=SK007	Replacement seat cover
473D00=SK003	Replacement back cover

\* Gives you the option of ordering a second cover (replacement cover).

## Seat and back upholstery service (seating shell included)



The upholstery is applied over both the aluminium shell and the cushion so that they are enclosed in a single cover.

Order no.	Description
473C00=SK004	Seat cover (shell included)*
473D00=SK004	Back cover (shell included)*
473C00=SK009	Replacement seat cover (shell included)
473D00=SK002	Replacement back cover (shell included)

\* Gives you the option of ordering a second cover (replacement cover).

**Upholstery for single components (no illustration)**

We offer an upholstery service for small parts.

**For standard Otto Bock headrests**

Order no.	Size	Unit
473L00=SK002	1	pc.

**For custom Otto Bock headrests**

Order no.	Size	Unit
473L00=SK001	1	pc.

**For abductors**

Order no.	Size	Unit
473C00=SK006	1	pc.

**For thoracic pads (removable)**

Order no.	Size	Unit
473K00=SK009	1	pc.

## Aluminium shell coating

Order no.

475C23=SX100

We offer a coating service for the seat and back sections of the aluminium shell after it has been fitted.

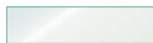
Alternatively, you can also order a coated aluminium blank from stock. (See the chapter "Seating shell modules")

**Please specify the colour when placing your order!**

## Colours



signal red



mother-of-pearl white



sparkle light orange



anthracite metallic



brilliant silver



enchanted blue



traffic yellow



candy red



sparkle red



ice blue



deep black



sparkle silver new



sparkle blue-green



dormant apple green



dormant sky blue



dormant marine blue



clear reptile glossy



sparkle granny smith



dormant vinho sparkle



saturn blue metallic



**A**

Abductor, detachable ..... 42  
 Abductor, folding ..... 42  
 Adjustable clamping lever ..... 58  
 Adjustment plate ..... 34  
 Adjustment track, complete ..... 56  
 Aluminium shell coating ..... 70  
 Arm ..... 31  
 Arm pad ..... 37  
 Arm pad support ..... 37  
 Arm rest for fitting chair ..... 8  
 Arm rest with side panel ..... 36  
 Arm support strap ..... 34  
 Artificial leather (Skai) ..... 47

**B**

Back-to-back strap material ..... 52  
 Back and seat vacuum cushion ..... 7  
 Belt ..... 21  
 Blind rivet pliers ..... 65  
 Buckle strap ..... 43

**C**

Calf support ..... 40  
 Channel forearm rest ..... 32  
 Chest and shoulder pad ..... 22  
 Chest belt with overlapping tongue ..... 22  
 Chest pad ..... 22  
 Coated ..... 16  
 Coating set ..... 64  
 Colours ..... 70  
 Combination head and neck support ... 26  
 Compressed air agitator ..... 64  
 Connection kit ..... 56  
 Cordless hand drill ..... 63

**D**

"Dartex" cover fabric ..... 47  
 "Design" cover fabric ..... 47  
 D-ring ..... 57  
 Digitization package ..... 7  
 Digitization stylus ..... 7

**E**

Electric cutter ..... 62  
 Electric jigsaw ..... 62

**F**

Feed-through shears with gears ..... 63  
 Fitting chair ..... 7  
 Fixation vest ..... 20  
 Foam cells ..... 51  
 Foam ..... 46  
 Foam saw ..... 65  
 Foam sheeting ..... 52  
 Foot bucket ..... 41  
 Foot bucket pad ..... 41  
 Four-way chest strap kit ..... 22  
 Four-way clamp buckle ..... 56  
 Freehand milling set ..... 62

**G**

Glide buckle ..... 57  
 "Goose Neck" mounting kit ..... 29  
 Groin strap ..... 21

**H**

Hand pump ..... 7  
 Hand support, cone type ..... 34  
 Hand support, flat ..... 33  
 Hand support, horn type ..... 33  
 Hand support, palm extensor ..... 33  
 Hang-in adapter  
 for folding wheelchairs ..... 17  
 Head ..... 25, 26  
 Headrest ..... 27  
 Hinge ..... 56  
 Hook ..... 43

**I**

"Ideal" metal shears ..... 63  
 "Ideal" metal shears with gears ..... 63  
 Individual ..... 8

**L**

Lap belt ..... 20, 21  
 Lap belt with metal buckle ..... 21  
 Lap belt with spinae pads ..... 20  
 Leg ..... 39

**M**

Manual ..... 65  
 Materials ..... 45  
 Mounting clamp, reinforced ..... 29  
 Multi-axis mounting kit, offset ..... 28  
 Multi-axis mounting kit, straight ..... 28

<b>N</b>	
Neck support.....	26
Neoprene adhesive .....	48
"Neoprene" cover fabric.....	46
"Nylon" fabric for strap systems .....	47
<b>O</b>	
Otto Bock SuperSkin .....	48
<b>P</b>	
"Parallel" footrest system .....	42
"Parallel" seating shell adapter .....	17
Pelvic band .....	20
Pelvis .....	19
Plastazote .....	50
Positioning joint.....	58
Protective edge band .....	56
Punching shears .....	63
<b>R</b>	
Relax foam .....	50
Rounded arm rest .....	36
<b>S</b>	
Seat and back upholstery service .....	68
Seating .....	15
Shape .....	11
"Shape" seat and back cushions made of B75 foam .....	12
"Shape" seat and back cushions made of B75 foam with radius .....	12
"Shape" seat and back cushions made of neopolene .....	13
"Shape" seat and back cushions made of neopolene with radius .....	13
Shape system .....	3 – 9
Small .....	55
Snap buckle .....	57
Soft foam component A.....	49
Soft foam component B.....	49
Soft headrest .....	27
"Spacer" cover fabric .....	46
Spray booth with ventilator.....	64
Star handle.....	58
Strap guide loop.....	56
Strap material, black .....	52
Straps for chest pad / hook-and-loop..	23
Straps for chest pad / snap buckle .....	23
STS clamps .....	40
STS mounting kit, offset .....	40
SuperSkin cleaner.....	49
Swivel .....	34
Swivel unit for channel forearm rest.....	35
<b>T</b>	
TechnoGel® sheet.....	51
"Terry cloth" cover fabric.....	46
ThermoLyn® .....	50
Thinner .....	48
Tools .....	61
Trapezoid.....	16
Tray.....	37
<b>U</b>	
Upholstering.....	67
Upholstery for single components.....	69
<b>V</b>	
Vacuum cushion.....	7
<b>W</b>	
Wedge-shaped neck support.....	27
Wheelchair arm rest.....	35
<b>X</b>	
X-shaped neck support.....	28



# Otto Bock worldwide

## Europe



**Otto Bock HealthCare Deutschland GmbH**  
Max-Näder-Str. 15 · D-37115 Duderstadt  
Tel. +49 5527 848-3433 · Fax +49 5527 848-1460  
e-mail: healthcare@ottobock.de · www.ottobock.com



**Otto Bock Healthcare Products GmbH**  
Kaiserstraße 39 · A-1070 Wien  
Tel. +43 1 5269548 · Fax +43 1 5267985  
e-mail: vertrieb.austria@ottobock.com  
www.ottobock.at



**Otto Bock Adria Sarajevo D.O.O.**  
Omladinskih radnih brigada 5 · BIH-71000 Sarajevo  
Tel. +387 33 766200 · Fax +387 33 766201  
obadria@bih.net.ba · www.ottobockadria.com.ba



**Otto Bock Suisse AG**  
Pilatusstrasse 2, Postfach 87 · CH-6036 Dierikon  
Tel. +41 41 4556171 · Fax +41 41 4556170  
e-mail: suisse@ottobock.com



**Otto Bock ČR s.r.o.**  
Protetická 460 · CZ-33008 Zruč-Senec  
Tel. +420 37 7825044 · Fax +420 37 7825036  
e-mail: email@ottobock.cz · www.ottobock.cz



**Otto Bock Algérie E.U.R.L.**  
32, rue Ahcène outalab · Coopérative les Mimosas  
Mackle-Ben Aknoun · Alger · DZ-Algérie  
Tel. +213 21 913863 · Fax +213 21 913863  
e-mail: information@ottobock.fr · www.ottobock.fr



**Otto Bock Iberica S.A.**  
C/Majada, 1 · E-28760 Tres Cantos (Madrid)  
Tel. +34 91 8063000 · Fax +34 91 8060415  
e-mail: info@ottobock.es · www.ottobock.es



**Otto Bock Orthopedic Services S.A.E.**  
115 El · Alameen St. · Mohandessein – Giza  
Tel. +20 23 3024390 · Fax +20 23 3024380  
e-mail: info@ottobock.com.eg · www.ottobock.com



**Otto Bock France SNC**  
4 Rue de la Réunion · B.P. 11  
F-91941 Les Ulis Cedex  
Tél. +33 1 69188830 · Fax +33 1 69071802  
e-mail: information@ottobock.fr · www.ottobock.fr



**Otto Bock Healthcare plc**  
32, Parsonage Road · Englefield Green  
GB-Egham, Surrey TW20 0LD  
Tel. +44 1784 744900 · Fax +44 1784 744901  
e-mail: bockuk@ottobock.com · www.ottobock.co.uk



**Otto Bock Hungária Kft.**  
Tatai út 74. · H-1135 Budapest  
Tel. +36 1 4511020 · Fax +36 1 4511021  
e-mail: info@ottobock.hu · www.ottobock.hu



**Otto Bock Adria D.O.O.**  
Dr. Franje Tuđmana 14 · HR-10431 Sveta Nedelja  
Tel. +385 1 3361544 · Fax +385 1 3365986  
e-mail: info@ottobock.hr · www.ottobock.hr



**Otto Bock Italia S.R.L.**  
Via Filippo Turati 5/7 · I-40054 Budrio (BO)  
Tel. +39 051 692-4711 · Fax +39 051 692-4720  
e-mail: info.italia@ottobock.com · www.ottobock.it



**Otto Bock Benelux B.V.**  
Ekkersrijt 1412 · NL-5692 AK-Son en Breugel  
Tel. +31 499 474585 · Fax +31 499 476250  
e-mail: info.benelux@ottobock.com  
www.ottobock.nl



**Industria Ortopédica Otto Bock Unip. Lda.**  
Av. Miguel Bombarda, 21 · 2º Esq.  
P-1050-161 Lisboa  
Tel.: +351 21 3535587 · Fax: +351 21 3535590  
e-mail: ottobockportugal@mail.telepac.pt



**Otto Bock Polska Sp. z o. o.**  
Ulica Korolowa 3 · PL-61-029 Poznań  
Tel. +48 61 6538250 · Fax +48 61 6538031  
e-mail: ottobock@ottobock.pl · www.ottobock.pl



**Otto Bock Romania srl**  
Șos de Centura Chitila-Mogoșoia Nr. 3  
RO-Chitila 077405, Jud. Ilfov  
Tel. +40 21 4363110 · Fax +40 21 4363023  
e-mail: lonut.savescu@ottobock.ro · www.ottobock.ro



**Otto Bock Russia**  
5. Donskoj proezd 15, strojenie 16  
RUS-119334 Moskau  
Tel. +7 495 564-8360 · Fax +7 495 564-8363  
e-mail: info@ottobock.ru · www.ottobock.ru



**Otto Bock Scandinavia AB**  
Koppargatan 3 · Box 623 · S-60114 Norrköping  
Tel. +46 11 280600 · Fax +46 11 312005  
e-mail: info@ottobock.se · www.ottobock.se



**Otto Bock Slovakia s.r.o.**  
Čajkova 25 · SK-81105 Bratislava 1  
Slovenská Republika  
Tel./Fax 00421 2 52 44 21 88  
e-mail: info@ottobock.sk · www.ottobock.sk



**Otto Bock Sava d.o.o.**  
Maksima Gorkog bb · 18000 Niš, Republika Srbija  
Tel./Fax +381 18 539 191  
e-mail: info@ottobock.rs · www.ottobock.rs



**Otto Bock Ortopedi ve Rehabilitasyon Tekniği Ltd. Şti.**  
Ali Dursun Bey Caddesi · Lati Lokum Sokak  
Meriç Sitesi B Blok No: 6/1  
TR-34387 Mecidiyeköy-İstanbul  
Tel. + 90 212 3565040 · Faks +90 212 3566688  
e-mail: info@ottobock.com.tr · www.ottobock.com.tr

## Americas



**Otto Bock Argentina S.A.**  
Piedras, 1314 · Código Postal:  
RA-1147 Ciudad Autónoma de Buenos Aires  
Tel. + 54 11 4300 0076  
e-mail: ventas@ottobock.com.ar



**Otto Bock do Brasil Ltda.**  
Rua Jovelino Aparecido Miguel, 32  
BR-13051-030 Campinas-São Paulo  
Tel. +55 19 3729 3500 · Fax +55 19 3269 6061  
e-mail: ottobock@ottobock.com.br · www.ottobock.com.br



**Otto Bock Healthcare Canada Ltd.**  
5045 S. Service Road  
Burlington Ontario L7L 5Y7  
Tel. +1 800 665 3327 · Fax +1 800 463 3659  
e-mail: info@ottobock.ca · www.ottobock.ca



**Otto Bock HealthCare Andina Ltda.**  
Clínica Universitaria Teletón, Autopista Norte km 21  
La Caro · Chia, Cundinamarca  
Bogotá / Colombia  
Tel. +57 1 8619988 · Fax +57 1 8619977  
e-mail: ottobock@telesat.com.co



**Otto Bock de Mexico S.A. de C.V.**  
Av. Avila Camacho 2246 · Jardines del Country  
MEX-Guadalajara, Jal. 44210  
Tel. +52 33 38246787 · Fax +52 33 38531935  
e-mail: info@ottobock.com.mx  
www.ottobock.com.mx



**Otto Bock HealthCare LP**  
Two Carlson Parkway North, Suite 100  
U.S.A.-Minneapolis, Minnesota 55447  
Phone +1 800 328 4058 · Fax +1 800 962 2549  
e-mail: usa.customerservice@ottobock.com  
www.ottobockus.com

## Asia/Pacific



**Otto Bock Australia Pty. Ltd.**  
Suite 1.01, Century Corporate Centre  
62 Norwest Boulevard · Norwest Business Park  
AUS-Baulkham Hills NSW 2153  
Tel. +61 2 88182800 · Fax +61 2 88182898  
e-mail: healthcare@ottobock.com.au  
www.ottobock.com.au



**Beijing Otto Bock Orthopaedic Industries Co. Ltd.**  
HengXiang Tower · No.15 Tuanjiehu South Road  
Chaoyang District · Beijing 100026 · P.R.China  
Tel. +86 10 85986880 · Fax +86 10 85980040  
e-mail: china@ottobock.com.cn · www.ottobock.com.cn



**Otto Bock Asia Pacific Ltd.**  
Suite 3218, 32/F., Sun Hung Kai Centre  
30 Harbour Road, Wanchai · Hong Kong  
Tel No. +852 2598 9772 · Fax No. +852 2598 7886  
e-mail: info@ottobock.com.hk



**Otto Bock HealthCare India Pvt. Ltd.**  
Behind Fairlawn Housing Society  
Sion Trombay Road  
Chembur · IND-Mumbai 400 071  
Tel. +91 22 2520 1268 · Fax +91 22 2520 1267  
e-mail: information@indiaottobock.com  
www.ottobockindia.com



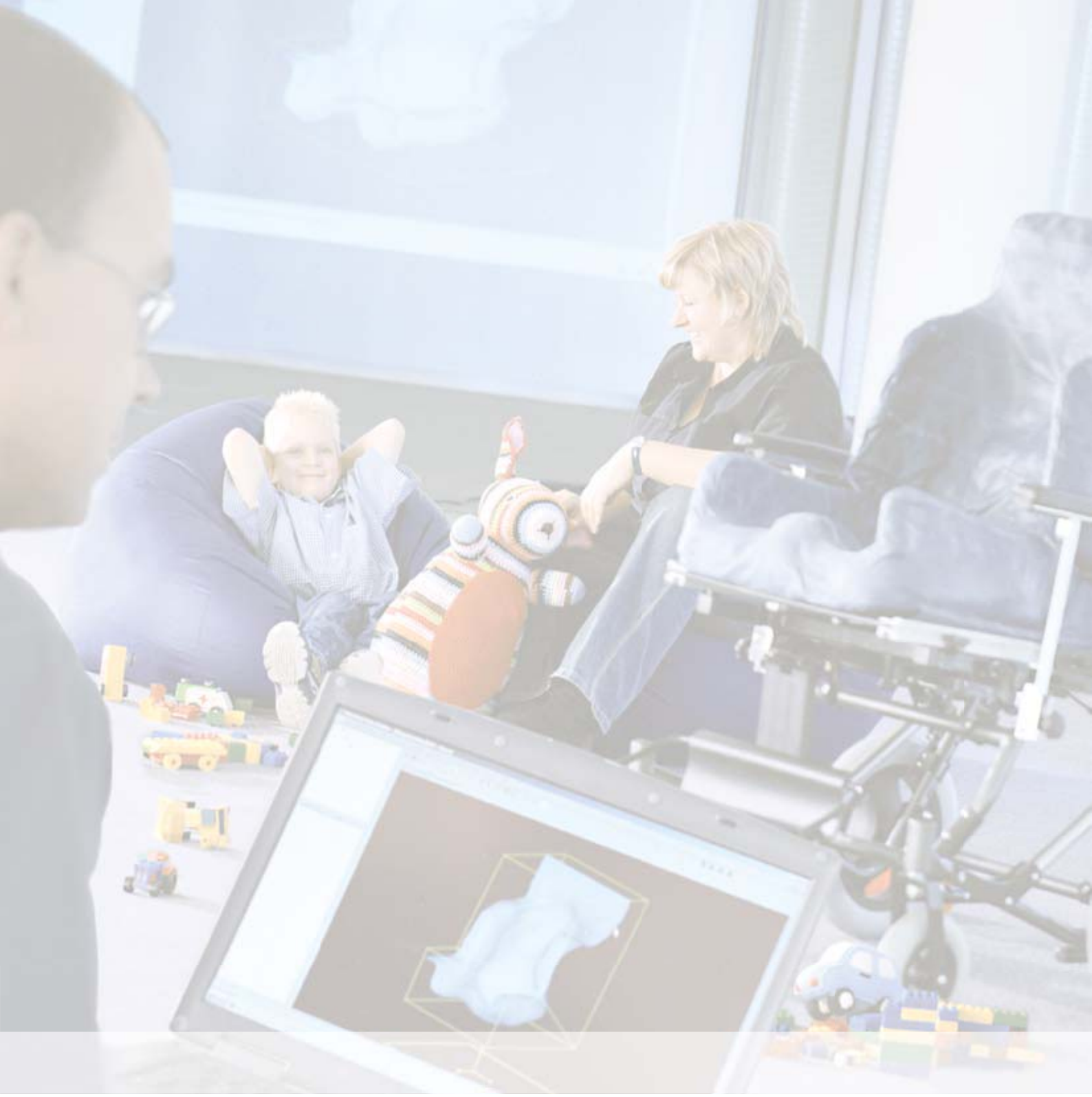
**Otto Bock Japan K. K.**  
Yokogawa Building 8F · 4-4-44 Shibaura, Minato-ku  
J-Tokyo 108-0023  
Tel. +81 3 3798-2111 · Fax +81 3 3798-2112  
e-mail: ottobock@ottobock.co.jp · www.ottobock.co.jp



**Otto Bock Korea HealthCare Inc.**  
Beakyoung B/D 2FL · 37-22, Samsung-dong  
Gangnam-gu · ROK-Seoul 135-090  
Tel. +82 2 577-3831 · Fax +82 2 577-3828  
e-mail: info@ottobockkorea.com · www.ottobockkorea.com



**Otto Bock South East Asia Co. Ltd.**  
1741 Phaholyothin Road,  
Kwaeng Chatuchark, Khet Chatuchark,  
T-Bangkok 10900  
Tel. +66 2 930 3030 · Fax +66 2 930 3311  
e-mail: obsea@ottobock.co.th · www.ottobock.co.th



*Otto Bock*<sup>®</sup>

**QUALITY FOR LIFE**

**Otto Bock HealthCare GmbH**

Max-Näder-Straße 15 · 37115 Duderstadt / Germany · Phone +49 5527 848-0 · Fax +49 5527 848-1524  
healthcare@ottobock.de · www.ottobock.com